





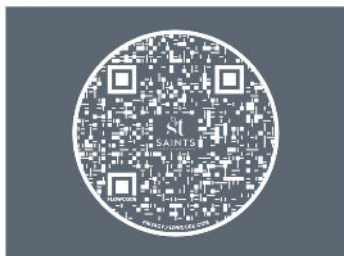
# DENMARK ROAD

W13 8RG

**£1,750,000**

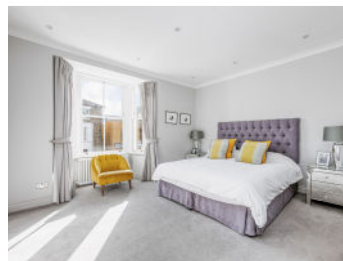
Nestled in the heart of Ealing Broadway, a vibrant jewel in West London's crown, this semi-detached house is a testament to quality and design. The property, extensively renovated, stands as a stunning family home offering a blend of urban vibrancy and suburban tranquility.





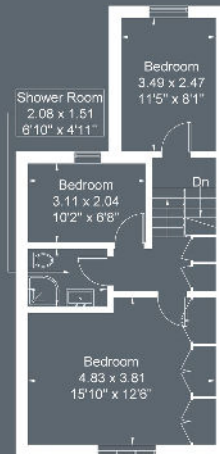
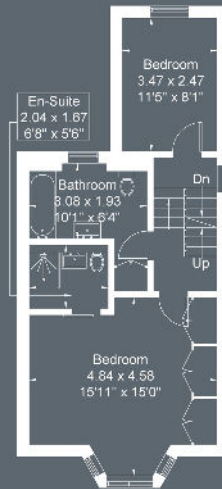
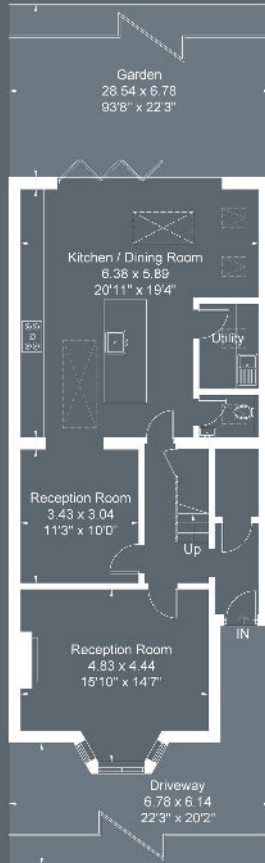
**st**  
**SAINTS**  
ESTATE CONSULTANCY

T. 020 8998 0009  
E. HELLO@MYSAINTS.LONDON  
A. 78 PITSHANGER LANE, LONDON W5 1QX  
W. MYSAINTS.LONDON



# Denmark Road

Approximate Gross Internal Area = 173.2 sq m / 1864 sq ft



Although every attempt has been made to ensure accuracy, all measurements are approximate.  
The floorplan is for illustrative purposes only and not to scale.

© www.perspective.co.uk