

Barnfield Road

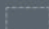
Approximate Gross Internal Area = 131.5 sq m / 1415 sq ft

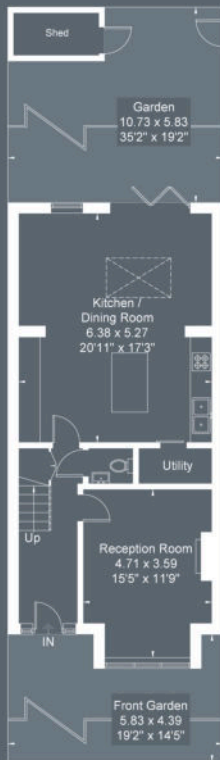
Eaves / Reduced Headroom = 6.3 sq m / 67 sq ft

Shed = 2.9 sq m / 31 sq ft

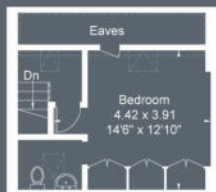
Total = 140.7 sq m / 1513 sq ft



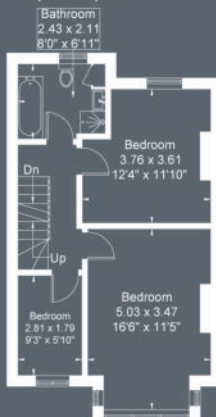
 = Reduced headroom below 1.5m / 5'0"



Ground Floor
64.1 sq m / 690 sq ft



Second Floor
20.2 sq m / 217 sq ft
Eaves / Reduced Headroom
6.3 sq m / 67 sq ft



First Floor
47.2 sq m / 508 sq ft

Although every attempt has been made to ensure accuracy, all measurements are approximate.
The floorplan is for illustrative purposes only and not to scale.
© www.perspective.co.uk



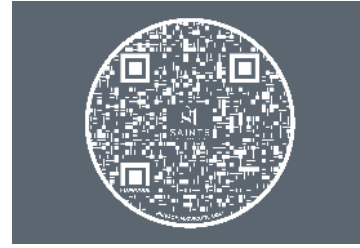


BARNFIELD ROAD

W5

£1,150,000 Guide

A stunning period home located in a serene and picturesque setting, comprising of generously proportioned living accommodation over three floors.



T. 020 8998 0009
E. HELLO@MYSAINTS.LONDON
A. 78 PITSHANGER LANE, LONDON W5 1QX
W. MYSAINTS.LONDON

