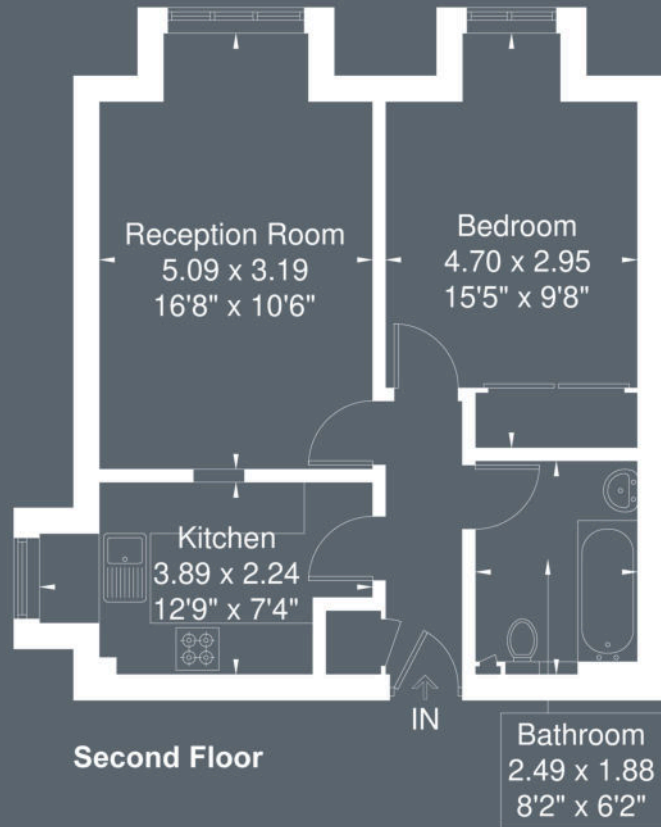


## Essan House

Approximate Gross Internal Area = 45.2 sq m / 486 sq ft



Although every attempt has been made to ensure accuracy, all measurements are approximate.  
The floorplan is for illustrative purposes only and not to scale.  
© www.perspective.co.uk





# ESSAN HOUSE

VICTORIA ROAD

**£350,000**

A lovely light filled apartment in good decorative order with allocated parking, share of freehold tenure and available for purchase chain free.

The property is located on the second floor of well-maintained and desirable block, comprising; secure video entry system, an excellent lounge area with bay window, a generously sized bedroom with built-in storage, a fitted bathroom suite and smartly fitted kitchen.




T. 020 8998 0009  
 E. HELLO@MYSAINTS.LONDON  
 A. 78 PITSHANGER LANE, LONDON W5 1QX  
 W. MYSAINTS.LONDON

