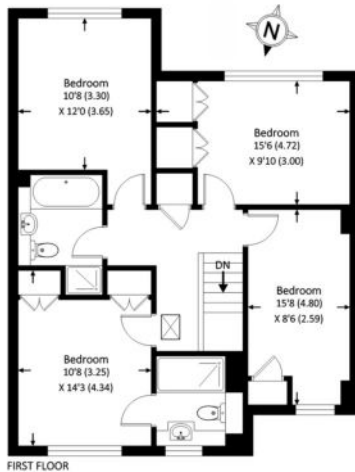


The Villas, W13

APPROX. TOTAL INTERNAL FLOOR AREA
 MAIN HOUSE = 1756 SQ FT 163.1 SQ METERS



Whilst every attempt has been made to ensure the accuracy of the floor plan contained here, measurements of doors, window and rooms are approximate and no responsibility is taken for any error, omission or misstatement. These plans are for representation purposes only as defined by RICS Code of Measuring Practice and should be used by any prospective purchaser. Specifically no guarantee is given on the total square footage of the property if quoted on this plan. Any figure given is for initial guidance only and should not be relied on as a basis of valuation. Copyright Saints Estate Consultancy





PROPERTY NAME

PROPERTY ADDRESS

£1,195,000

A stupendous double fronted semi-detached family home with impressive living accommodation and a glorious south facing rear garden.




T. 020 8998 0009
 E. HELLO@MYSAINTS.LONDON
 A. 78 PITSHANGER LANE, LONDON W5 1QX
 W. MYSAINTS.LONDON

